



Reno-Tahoe
Airport
Authority

Reno-Tahoe International Airport

Passengers and Cargo Statistics Report

June 2024



RNO OVERVIEW

June 2024 vs. June 2023

Total Passengers:	Up 11.7%
Avg. Enplaned Load Factor:	80.3%, down 3.1 pts.
Departures:	Up 12.4%
Departing Seats:	Up 15.6%
Cargo Volume:	Down 5.5%

SUMMARY

Reno-Tahoe International Airport (RNO) served 457,524 passengers in June 2024, an increase of 11.7% versus the same period last year. In June 2024, RNO was served by 10 airlines to 24 non-stop destinations. The total seat capacity increased 15.6% and flights increased 12.4% when compared to June 2023.

RNO handled 9,160,826 pounds of air cargo in June 2024, a decrease of 5.5% when compared to June 2023.

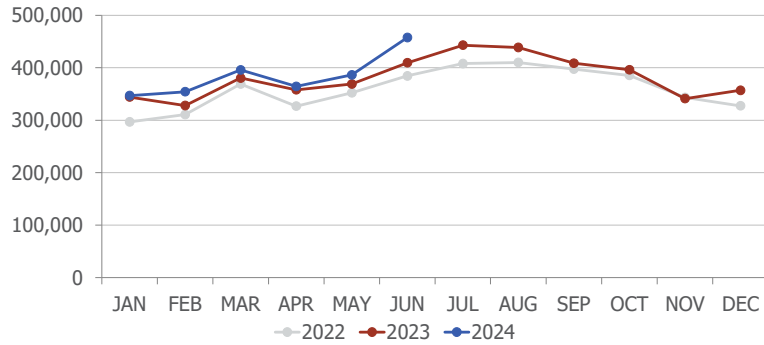
Schedule Highlights

- Alaska Airlines will begin twice daily non-stop flights between RNO and Los Angeles (LAX) on October 1.
- Alaska Airlines will begin a daily seasonal non-stop flight between RNO and San Diego (SAN) on December 19.

wemoveyou

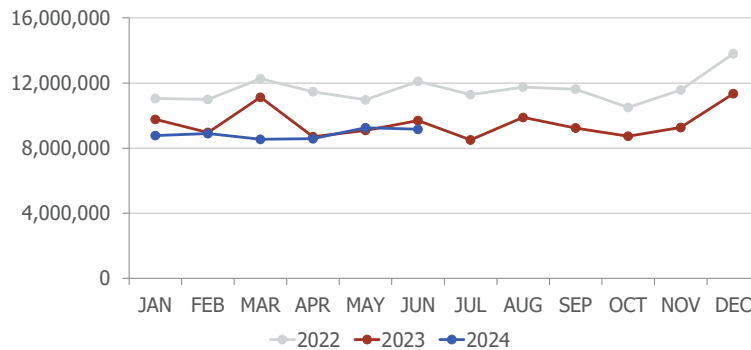


Passengers



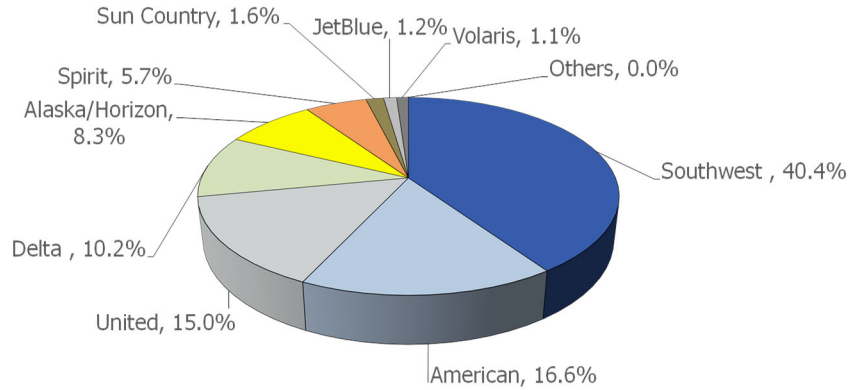
Total Passengers			
	Jun-24	Jun-23	Difference
Alaska/Horizon	37,911	37,077	2.2%
Allegiant Air	0	2,637	
American	75,782	59,256	27.9%
Delta	46,659	37,902	23.1%
JetBlue	5,459	10,678	-48.9%
Southwest	184,890	171,214	8.0%
Spirit	25,872	16,774	54.2%
Sun Country	7,409	6,021	23.1%
United	68,570	61,745	11.1%
Volaris	4,972	6,163	-19.3%

Cargo



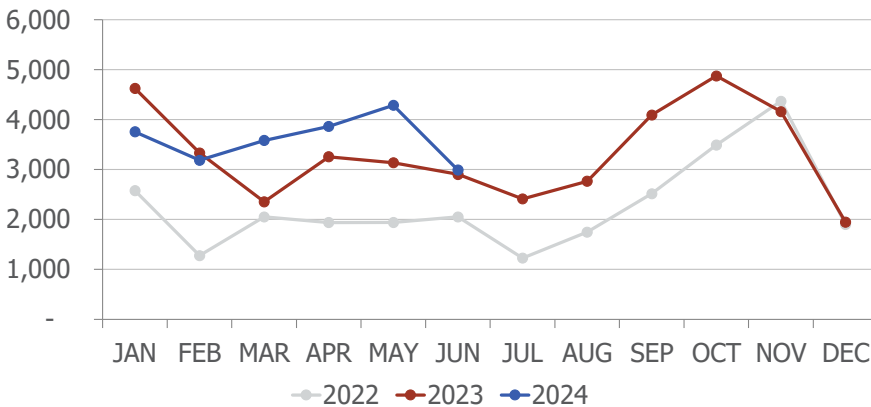
In June 2024, FedEx cargo volume was down 5.7% and UPS decreased 16.6%, when compared to June 2023. DHL, however, experienced a 56% increase in cargo volume during the same period.

AIRLINE MARKET SHARE (passengers)



Airline Market Share			
	Jun-24	Jun-23	YOY Change
Alaska/Horizon	8.3%	9.1%	(0.8)
Allegiant Air	n/a	0.6%	n/a
American	16.6%	14.5%	2.1
Delta	10.2%	9.3%	0.9
JetBlue	1.2%	2.6%	(1.4)
Southwest	40.4%	41.8%	(1.4)
Spirit	5.7%	4.1%	1.6
Sun Country	1.6%	1.5%	0.1
United	15.0%	15.1%	(0.1)
Volaris	1.1%	1.5%	(0.4)
Others	0.0%	0.0%	0.0

TOTAL CHARTER PASSENGERS



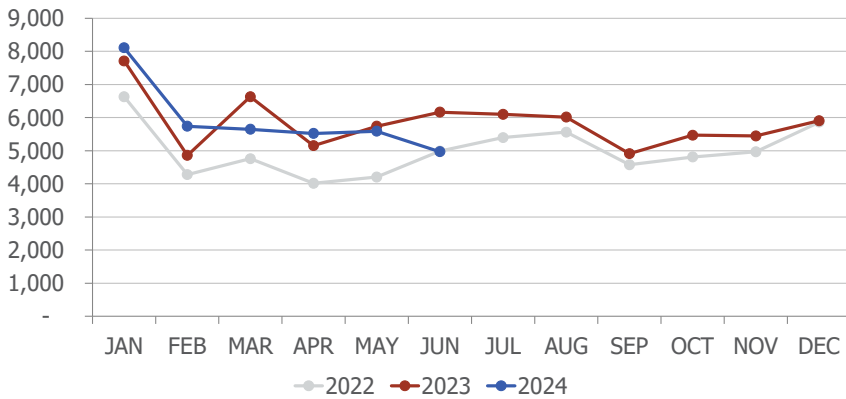
The airport served 2,990 passengers on charters, an increase of 3.1% when compared to June 2023. Sun Country Airlines was one airline offering charter flights at RNO during the month.

JSX public charter passenger count is not included in the figures above.

wemoveyou

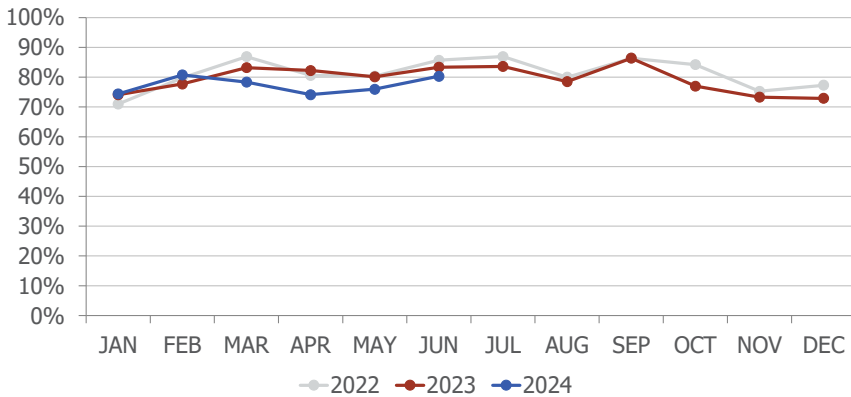


TOTAL INTERNATIONAL PASSENGERS

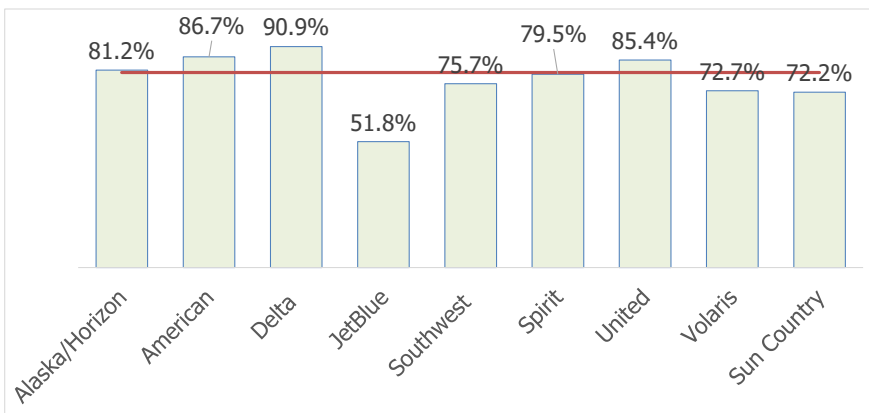


In June 2024, RNO served 4,972 international passengers, a decrease of 19.3% when compared to June 2023.

AVERAGE ENPLANED LOAD FACTOR



In June 2024, RNO's average enplaned load factor was 80.3%, down 3.1 pts. when compared to June 2023.

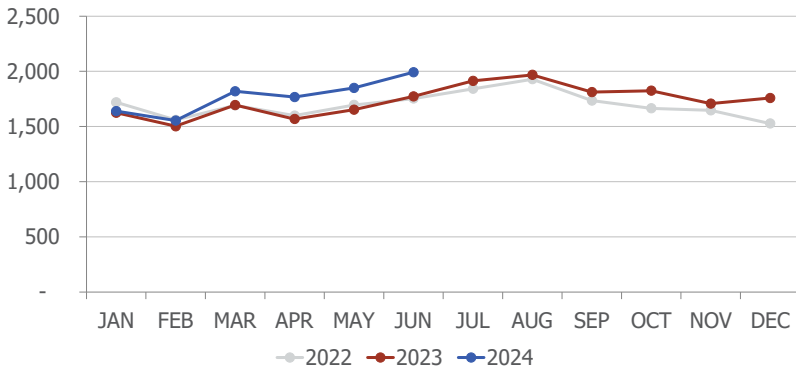


The red horizontal line on the left represents RNO's average enplaned load factor.

Sun Country's load factor includes charter flights.

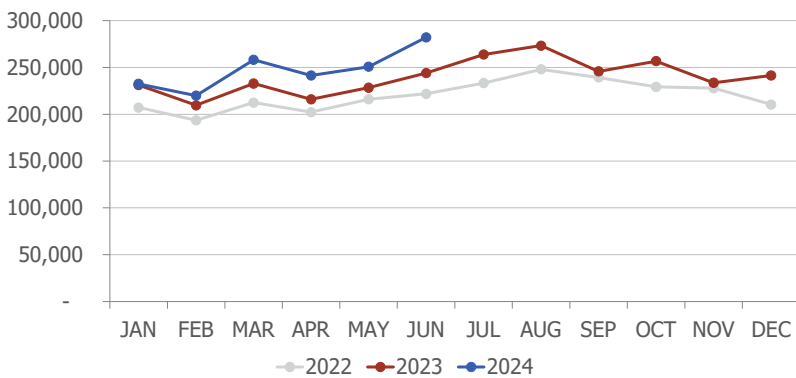
DEPARTURES

In June 2024, RNO handled 1,992 departures, an increase of 12.4% when compared to June 2023.



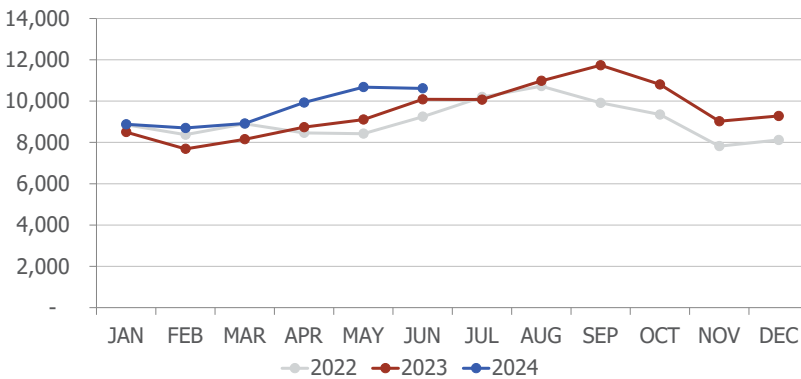
DEPARTING SEATS

In June 2024, RNO offered 282,210 departing seats, an increase of 15.6% when compared to June 2023.



TOTAL OPERATIONS

A total of 10,615 operations were handled at RNO in June 2024, an increase of 5.2% when compared to June 2023. Total operations include: Air Carrier, Air Taxi, General Aviation and Military operations as reported by the FAA.



August 2024 RNO Flight Schedule

Destination	Airlines	Total Departures	Details
Atlanta	Delta	24	Daily 1-12. Five weekly Mon, Thu Fri, Sat, Sun
Austin	American	5	Daily 1-5
Burbank	Southwest	49	Daily. Twice daily on Mon, Thu, Fri, Sun
Chicago-Midway	Southwest	19	Five weekly on Mon, Thu Fri, Sun and Aug 3
Chicago-O'Hare	American	31	Daily
	United	31	Daily
Dallas-Love	Southwest	9	Twice weekly. Sat, Sun
Dallas/Fort Worth	American	117	Four daily. Three on 10,17,24,27,28. Twice on 31
Denver	Southwest	97	Three daily. Four on Sun
	United	133	Four daily. Five on 21-23,26,28-30. Six on 25
Guadalajara	Volaris	22	Daily. Mon-Fri
Houston-Intercontinental	United	7	Twice weekly Sat, Sun. Once on 26
Las Vegas	Southwest	286	Six to 10 daily. 11 daily on Mon, Thu, Fri.
	Spirit	91	Three daily. Once on 31
Long Beach	Southwest	62	Twice daily
Los Angeles	American	19	Three daily 23-25, 31. Twice on 26,30. Once on 27-29
	Delta	92	Three daily. Once on 31
	Southwest	38	Daily. Twice on 4. Three on 11,18,25
	Spirit	31	Daily
	United	62	Twice daily
Minneapolis/St. Paul	Delta	31	Daily
	Sun Country	11	Twice weekly Thu, Sun. Once on 2,5
New York-JFK	JetBlue	11	Daily. 1-11
Oakland	Southwest	45	Once daily. Twice on Mon. Thu, Fri
Phoenix	American	139	Four to five daily
	Southwest	77	Twice daily. Three on Mon, Thu, Fri, and 4
Portland	Alaska	107	Four daily. Three daily on 3,7,10,14,17, 20-31
Salt Lake City	Delta	93	Three daily
San Diego	Southwest	81	Three daily. Twice daily Tue, Wed, Sat
San Francisco	United	104	Three daily. Four daily 19-31. Twice on 5,12
San Jose	Southwest	31	Daily
Seattle	Alaska	153	Five daily. Four daily 24,31
	Multiple airlines		

6.27.2024

wemoveyou



Total Passengers Jun-24						
	Passengers		% Diff.	Passengers		YOY % Diff.
	2022	2023		2024		
JAN	296,641	344,268	16.1%	346,845	0.7%	
FEB	310,738	327,934	5.5%	354,252	8.0%	
MAR	368,946	380,363	3.1%	395,906	4.1%	
1st QTR	976,325	1,052,565	7.8%	1,097,003	4.2%	
APR	326,787	357,924	9.5%	364,374	1.8%	
MAY	352,255	368,930	4.7%	386,391	4.7%	
JUN	384,429	409,467	6.5%	457,524	11.7%	
2nd QTR	1,063,471	1,136,321	6.9%	1,208,289	6.3%	
JUL	407,867	442,942	8.6%			
AUG	409,942	438,621	7.0%			
SEP	397,404	408,732	2.9%			
3rd QTR	1,215,213	1,290,295	6.2%	0		
OCT	385,466	396,147	2.8%			
NOV	343,130	341,084	-0.6%			
DEC	327,353	356,972	9.0%			
4th QTR	1,055,949	1,094,203	3.6%	0		
TOTAL	4,310,958	4,573,384	6.1%			

Total Enplaned Passengers Jun-24				
Month	2022	2023	2024	% Diff.
JAN	147,773	171,374	172,968	0.9%
FEB	155,233	162,964	177,670	9.0%
MAR	185,671	193,748	202,409	4.5%
APR	163,973	177,665	179,020	0.8%
MAY	174,487	183,112	190,496	4.0%
JUN	191,234	203,452	226,631	11.4%
JUL	203,375	220,645		
AUG	199,365	214,616		
SEP	206,819	212,376		
OCT	193,074	197,692		
NOV	171,626	171,361		
DEC	162,680	176,035		
TOTAL	2,155,310	2,285,040		

Total Deplaned Passengers				
Month	2022	2023	2024	% Diff.
JAN	148,868	172,894	173,877	0.6%
FEB	155,505	164,970	176,582	7.0%
MAR	183,275	186,615	193,497	3.7%
APR	162,814	180,259	185,354	2.8%
MAY	177,768	185,818	195,895	5.4%
JUN	193,195	206,015	230,893	12.1%
JUL	204,492	222,297		
AUG	210,577	224,005		
SEP	190,585	196,356		
OCT	192,392	198,455		
NOV	171,504	169,723		
DEC	164,673	180,937		
TOTAL	2,155,648	2,288,344		

Total Cargo Volume in Pounds Jun-24						
	2022	2023	% Diff.	2024		YOY % Diff.
	Cargo in Pounds			Pounds	Metric Tons	
JAN	11,052,383	9,768,668	-11.6%	8,769,205	3,977	-10.2%
FEB	10,991,076	8,963,956	-18.4%	8,896,368	4,035	-0.8%
MAR	12,265,793	11,124,124	-9.3%	8,545,646	3,876	-23.2%
1st QTR	34,309,252	29,856,748	-13.0%	26,211,219	11,887	-12.2%
APR	11,470,613	8,704,717	-24.1%	8,581,674	3,892	-1.4%
MAY	10,966,757	9,094,192	-17.1%	9,253,876	4,197	1.8%
JUN	12,105,721	9,694,997	-19.9%	9,160,826	4,155	-5.5%
2nd QTR	34,543,091	27,493,906	-20.4%	26,996,376	12,243	-1.8%
JUL	11,289,066	8,508,207	-24.6%			
AUG	11,751,228	9,888,463	-15.9%			
SEP	11,624,360	9,237,788	-20.5%			
3rd QTR	34,664,654	27,634,458	-20.3%	0		
OCT	10,502,407	8,731,063	-16.9%			
NOV	11,569,577	9,273,796	-19.8%			
DEC	13,806,179	11,347,689	-17.8%			
4th QTR	35,878,163	29,352,548	-18.2%	0		
TOTAL	139,395,160	114,337,660	-18.0%			

Enplaned Passengers & Load Factor				
Airline	Enplaned PAX	Jun-24	Jun-23	Diff.
Alaska/Horizon	19,097	81.2%	89.4%	-8.2
Allegiant Air	0	n/a	95.4%	n/a
American	37,568	86.7%	94.8%	-8.1
Delta	23,604	90.9%	91.3%	-0.4
JetBlue	2,454	51.8%	69.2%	-17.4
Southwest	91,184	75.7%	78.1%	-2.4
Spirit	13,031	79.5%	85.9%	-6.4
Sun Country	3,625	72.2%	63.8%	8.3
United	33,464	85.4%	85.4%	0.0
Volaris	2,604	72.7%	83.3%	-10.6

wemoveyou

