



Reno-Tahoe International Airport

February 2012 Passenger and Cargo Traffic Statistics Reno-Tahoe International Airport



And
up we
go.

March 26, 2012



U.S. DOMESTIC INDUSTRY OVERVIEW FOR FEBRUARY 2012
All RNO Carriers Systemwide – year over year comparison

Average Load Factor:	79.6%, up 1.4 pts.
Number of Flights *:	Down (5.4%)
Capacity of Seats *:	Down (4.9%)
Crude Oil **::	\$102.2 per barrel Feb. 2012 vs. \$88.58 per barrel Feb. 2011

RNO OVERVIEW FOR FEBRUARY 2012 – year over year comparison

Total Passengers:	Down (11.4%)
Avg. Enplaned Load Factor:	76.6% down (3.1) pts.
Passenger Flights:	Down (10.8%)
Total Seats:	Down (7.9%)
Total Cargo:	Down (4.6%)

*Source: RNO Monthly Flight Activity Reports; *APGDat; ** U.S. Energy Information Administration*

FEBRUARY 2012 SUMMARY

Reno-Tahoe International Airport served 265,017 passengers in February 2012, a decrease of (11.4%) versus the same period last year. The main reason for the year-over-year passenger decline at RNO is the lack of peak-season ski traffic caused by dry weather conditions at Lake Tahoe. Last year, significant snowfall in Northern Nevada during February, drew record traffic to the Reno/Tahoe region. Calendar year-to-date passenger traffic at RNO is down (12.5%) at 524,029.

Reno-Tahoe International Airport handled 8,274,037 pounds of cargo in February 2012, a decrease of (4.6%) versus last year. These numbers are affected by weak cargo demand due to instability and uncertainty in the world’s major economies. As an example, Cathay Pacific, one of the world’s largest cargo carriers, reported a year-over-year decline of (10.4%) in cargo volumes during the first two months of this year. Calendar year-to-date cargo volume at RNO is down (3.1%) at 17,087,528.

In February 2012, RNO was served by six major airlines providing 58 nonstop departures each day to 16 destinations. This reflects a (10.8%) decrease in the number of flights versus last year. Some of these flights are seasonal in nature and have returned in March. Seasonal flights to Dallas on American Airlines and Seattle on Alaska and Southwest Airlines are expected to return in June. In addition to the seasonal decreases, Alaska Airlines and Southwest Airlines eliminated non-stop flights to Los Angeles and Boise from their networks.

Total seat capacity was down (7.9%) in February 2012 versus the same period last year. The U.S. domestic airlines are reducing seat capacity and eliminating costly routes from their networks to offset high fuel prices.

HIGHLIGHTS

Feb. 2012 vs. Feb. 2011

**Total Passengers
Down (11.4%)**

**Enplaned Passengers
Down (12.1%)**

**Deplaned Passengers
Down (10.7%)**

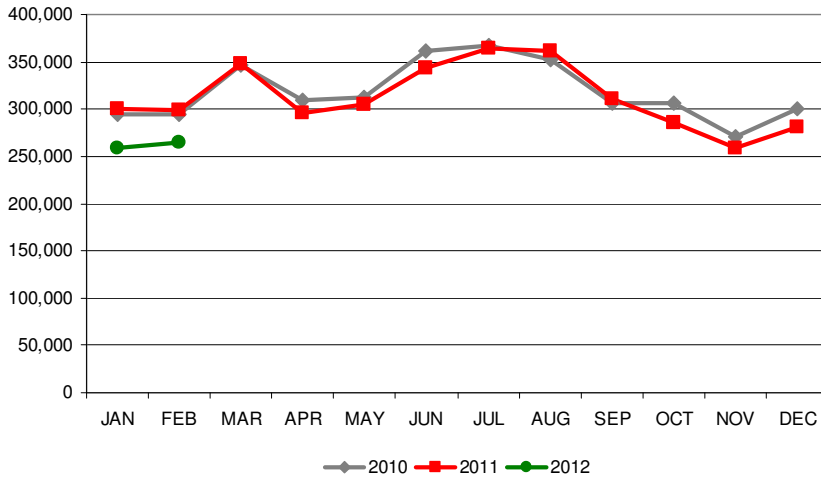
**Average Enplaned Load
Factor
76.6%, down (3.1) points**

**Total Cargo
Down (4.6%)**



Average enplaned load factor for scheduled airlines was 76.6%, (3.1) load factor points lower than the prior year.

Total Passengers

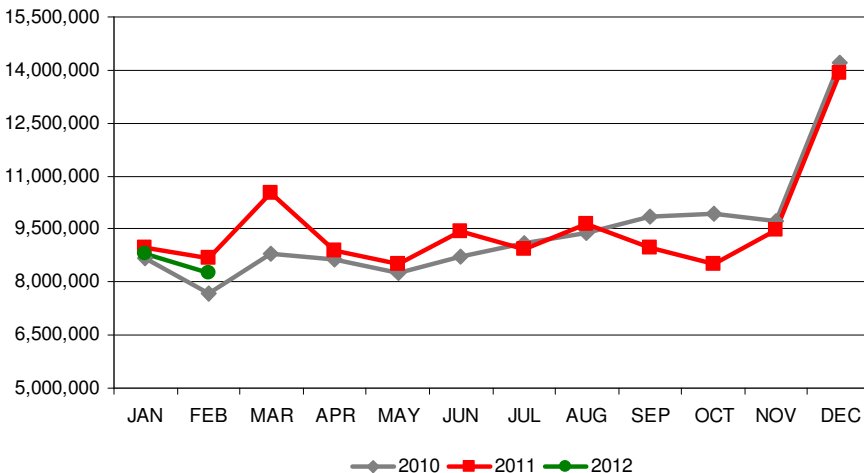


TOTAL PASSENGERS

In February 2012, total passenger traffic at RNO decreased (11.4%) versus last year. Year-over-year passenger traffic of Delta Air Lines and US Airways increased 14% and 6.8% respectively. American Airlines' passenger traffic decreased (15.3%), United Airlines was down (14.3%) and Southwest Airlines was down (13.3%). Alaska Airlines experienced a passenger traffic decline of (33.9%) for the same period as a result of ending their flights from Reno to Los Angeles.

Effective June 4, 2012, Alaska Airlines will begin two new non-stop daily flights to San Jose, CA. Flights will be timed to meet all of Alaska's Hawaii flights as well as having an early morning Reno departure to benefit business travelers.

Total Cargo

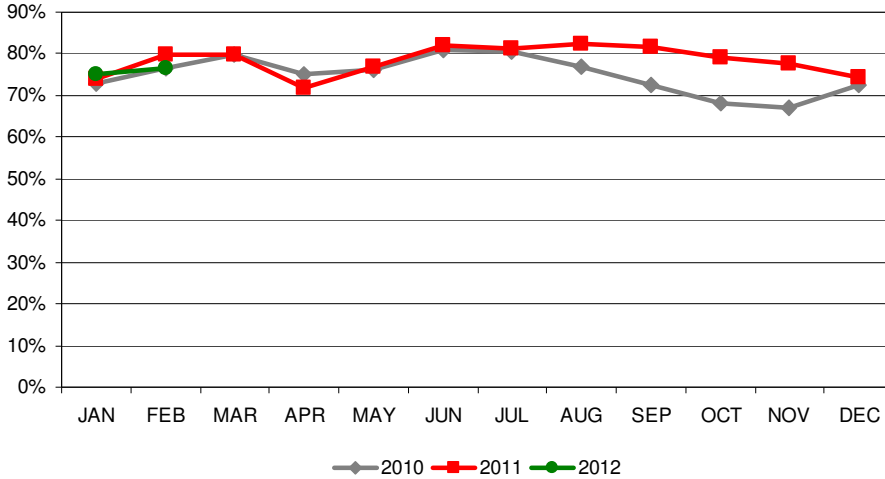


TOTAL CARGO

In February 2012, total cargo volume decreased (4.6%) versus the same period last year. Year-over-year cargo volume of Ameriflight increased 21.3%. Cargo volumes of UPS and FedEx decreased (2.0%) and (6.4%) respectively.

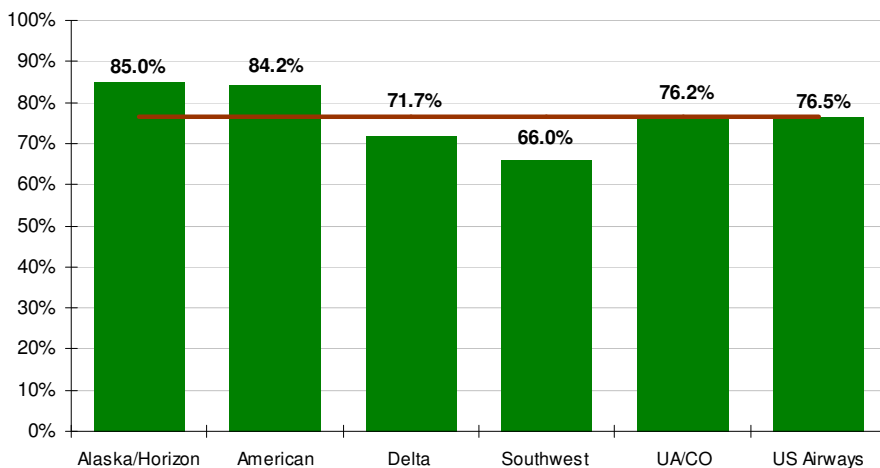


Average Enplaned Load Factors



Load Factors February 2012			
Airline	RNO	Network	Difference
Alaska	85.0%	83.7%	1.2
American	84.2%	77.6%	6.6
Delta	71.7%	76.9%	(5.2)
Southwest	66.0%	75.2%	(9.2)
UA/CO	76.2%	74.6%	1.6
US Airways	76.5%	78.3%	(1.8)

Enplaned Load Factors by Airlines

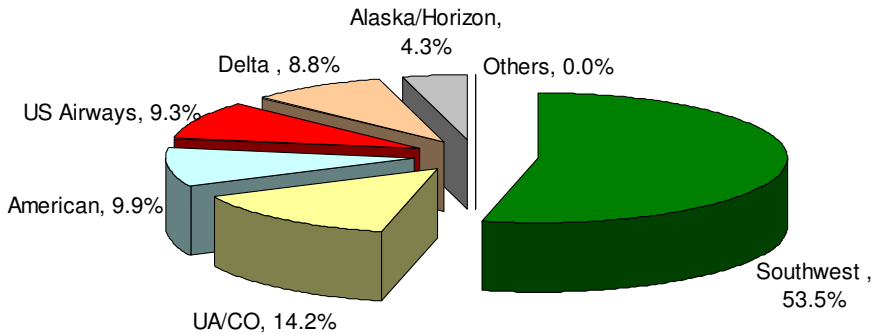


AIRLINE LOAD FACTORS

In February 2012, the average enplaned load factor at RNO was 76.6%, a decrease of (3.1) load factor points versus last year. Alaska Airlines reported the highest year-over-year load factor difference of 4.7 points, while Southwest Airlines experienced a decrease of (2.9) point for the same period.



Air Carrier Market Share



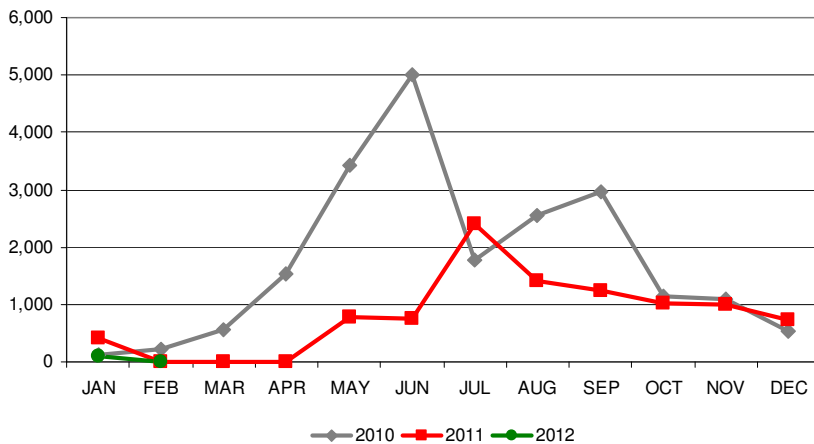
AIRLINE MARKET SHARE

In February 2012, Southwest Airlines carried a total of 141,721 passengers with a passenger market share of 53.5%. The next highest market share was United/Continental at 14.2% followed by American Airlines with 9.9%, US Airways with 9.3%, Delta Air Lines at 8.8% and Alaska Airlines carried 4.3% of the total passengers at Reno-Tahoe International Airport.

Air Carrier Market Share

	Feb-12	Feb-11	YOY Change
Alaska/Horizon	4.3%	5.7%	(1.4)
American	9.9%	10.3%	(0.5)
Delta	8.8%	6.9%	2.0
Southwest	53.5%	54.6%	(1.2)
UA/CO	14.2%	14.7%	(0.5)
US Airways	9.3%	7.7%	1.6
Others	0.0%	0.0%	0.0

Total Domestic Charter Passengers

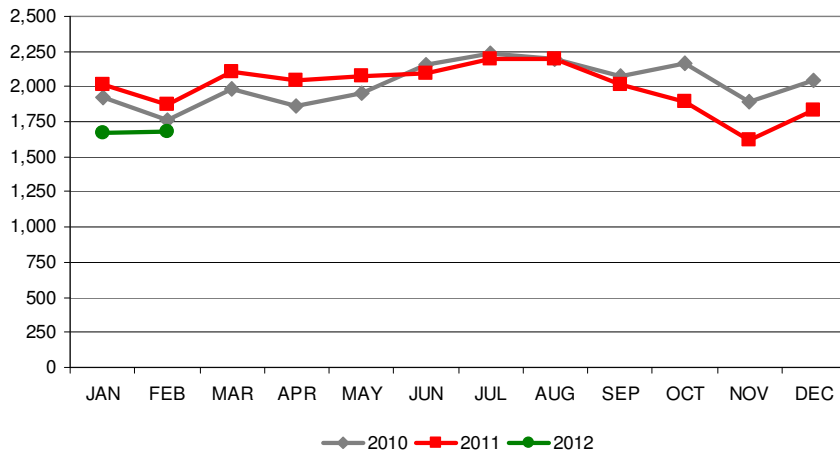


DOMESTIC CHARTER PASSENGERS

In February 2012, there was no charter activity at Reno-Tahoe International Airport.



Monthly Scheduled Departures



Schedule Changes

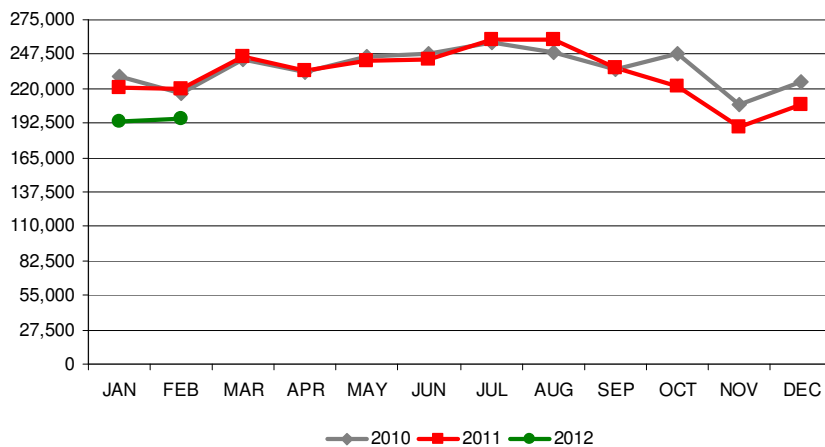
Alaska Airlines

- Eliminated non-stop service to Los Angeles in April 2011.
- Begins non-stop service to San Jose in June 2012

United/Continental

- Started non-stop seasonal flight to Houston in February 2011, which returned in March 2012.

Monthly Scheduled Seats



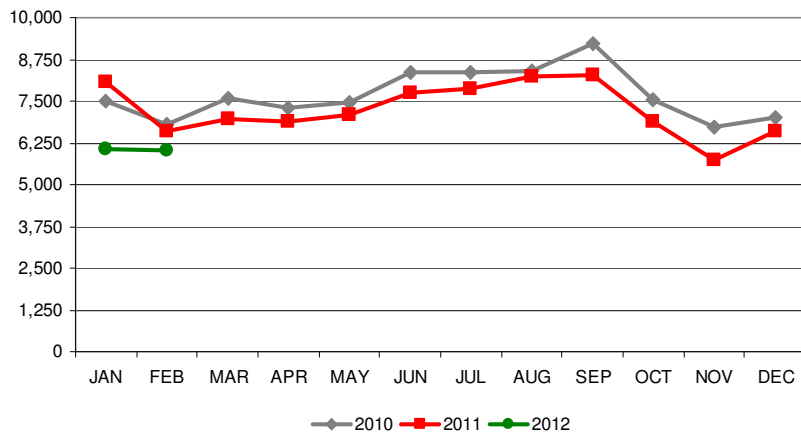
Delta Air Lines

- Started non-stop daily flight to Minneapolis in July 2011.

Southwest Airlines

- Added a daily flight to Denver in March 2011.
- Eliminated non-stop service to Boise in January 2012.

Total Operations



TOTAL OPERATIONS

A total of 6,012 operations occurred at RNO in February 2012, down (8.8%) versus the same period last year. Total operations include Air Carrier, Air Taxi, General Aviation and Military operations as reported by the FAA.



Reno-Tahoe International Airport

Total Passengers February-12					
	Passengers		YOY % Change	Passengers	
	2010	2011		2012	YOY % Change
JAN	293,756	300,125	2.2%	259,012	-13.7%
FEB	294,662	299,090	1.5%	265,017	-11.4%
MAR	346,846	348,583	0.5%		
1st Quarter	935,264	947,798	1.3%		
APR	309,533	295,537	-4.5%		
MAY	312,378	304,220	-2.6%		
JUN	361,406	343,054	-5.1%		
2nd Quarter	983,317	942,811	-4.1%		
JUL	367,997	364,849	-0.9%		
AUG	352,764	361,348	2.4%		
SEP	306,045	311,031	1.6%		
3rd Quarter	1,026,806	1,037,228	1.0%		
OCT	306,953	285,490	-7.0%		
NOV	270,586	259,425	-4.1%		
DEC	300,467	281,403	-6.3%		
4th Quarter	878,006	826,318	-5.9%		
TOTAL	3,823,393	3,754,155	-1.8%		
YTD Total		599,215		524,029	-12.5%

Total Scheduled Enplaned Passengers February-12				
	2010	2011	2012	YOY % Change
JAN	148,805	151,753	131,484	-13.4%
FEB	145,935	149,253	131,201	-12.1%
MAR	173,783	176,029		
APR	155,967	148,920		
MAY	154,683	151,672		
JUN	173,887	169,309		
JUL	184,017	179,717		
AUG	174,797	178,906		
SEP	154,522	158,663		
OCT	154,380	143,851		
NOV	134,723	129,071		
DEC	145,532	136,483		
TOTAL	1,901,031	1,873,627		
YTD Total		301,006	262,685	-12.7%

Total Deplaned Passengers February-12				
	2010	2011	2012	YOY % Change
JAN	144,826	148,053	127,179	-14.1%
FEB	148,506	149,837	133,816	-10.7%
MAR	172,823	172,554		
APR	152,986	146,617		
MAY	155,702	152,207		
JUN	184,651	173,343		
JUL	183,031	183,814		
AUG	176,391	181,611		
SEP	150,035	151,844		
OCT	151,999	141,158		
NOV	134,860	129,993		
DEC	154,682	144,557		
TOTAL	1,910,492	1,875,588		
YTD Total		297,890	260,995	-12.4%

Total Cargo February-12						
	Cargo in Pounds		YOY % Change	2012		
	2010	2011		Pounds	Metric Tons	
JAN	8,695,804	8,959,543	3.0%	8,813,491	3,997	-1.6%
FEB	7,679,924	8,674,321	12.9%	8,274,037	3,752	-4.6%
MAR	8,814,895	10,513,446	19.3%			
1st Quarter	25,190,623	28,147,310	11.7%			
APR	8,633,892	8,870,669	2.7%			
MAY	8,273,448	8,510,228	2.9%			
JUN	8,737,038	9,437,259	8.0%			
2nd Quarter	25,644,378	26,818,156	4.6%			
JUL	9,113,694	8,932,737	-2.0%			
AUG	9,388,206	9,646,833	2.8%			
SEP	9,871,400	8,958,988	-9.2%			
3rd Quarter	28,373,300	27,538,558	-2.9%			
OCT	9,915,411	8,527,399	-14.0%			
NOV	9,706,711	9,494,432	-2.2%			
DEC	14,186,519	13,928,256	-1.8%			
4th Quarter	33,808,641	31,950,087	-5.5%			
TOTAL	102,358,767	113,016,942	10.4%			
YTD Total		17,633,864		17,087,528	7,749	-3.1%

Load Factors February-12				
	Enplaned PAX	Feb-12	Feb-11	Diff.
Alaska/Horizon	5,619	85.0%	80.3%	4.7
American	12,950	84.2%	86.9%	-2.6
Delta	11,454	71.7%	80.0%	-8.4
Southwest	70,248	66.0%	68.9%	-2.9
United/Continental	18,833	76.2%	82.5%	-6.3
US Airways	12,097	76.5%	79.5%	-3.0

Source: RNO Monthly Flight Activity Reports